

Grapesvine News



COLORADO RIVER HISTORICAL SOCIETY MUSEUM

ACCESS BRIDGES

The Dam'n News Vol 1. – No. 9

January 17, 1947



The following article is taken from the Dam'n News , a weekly publication by employees of Utah Construction during the construction of Davis Dam.

The start of any large construction job involves three immediate operations, distinct but equally important: building the camp; building the maintenance and repair shops; and developing access to the work area. At the Davis Dam site, the location of the work area in relation to the camp and shops required construction of several timber trestle bridges. Each bridge was located and built for a specific purpose, and the following outline will give a general picture of this feature of the construction plant and its relation to the overall construction of the dam. The bridges are numbered from the downstream unit, proceeding upstream.

BRIDGE NO. 1

Constructed across the Colorado River between the end of the Kingman highway and the contractor's townsite. Bridge No 1 serves as access from the townsite to the Kingman road, and connects the Kingman and Searchlight highways. However, its primary purpose is to act as a haul road from the gravel processing plant below the townsite to the aggregate storage bins south of the concrete mixing plant. Three quarters of a million cubic yards of separated sand and gravel will be transported over this bridge before the power house and outlet works are completed.

BRIDGE NO. 2

Originally built during the first contract in 1942, this bridge was re-decked in the life of the present contract, and has served as the main access between the Arizona and Nevada sides of the river. The main portion of the routine hauling passes across this trestle.

BRIDGE NO. 3

Bridge No. 3 is the main haul bridge. Placed directly between the excavation area and the stock piles, it forms a part of the straight-line haul road over which Euclid trucks carry twelve to fourteen thousand cubic yards of excavated rock per day. Since its completion in May of last year until the rock excavation is finally finished, a total of over two and one half million cubic yards of rock will have been transported from Arizona to Nevada over this main haul bridge.

[con't on page 2](#)

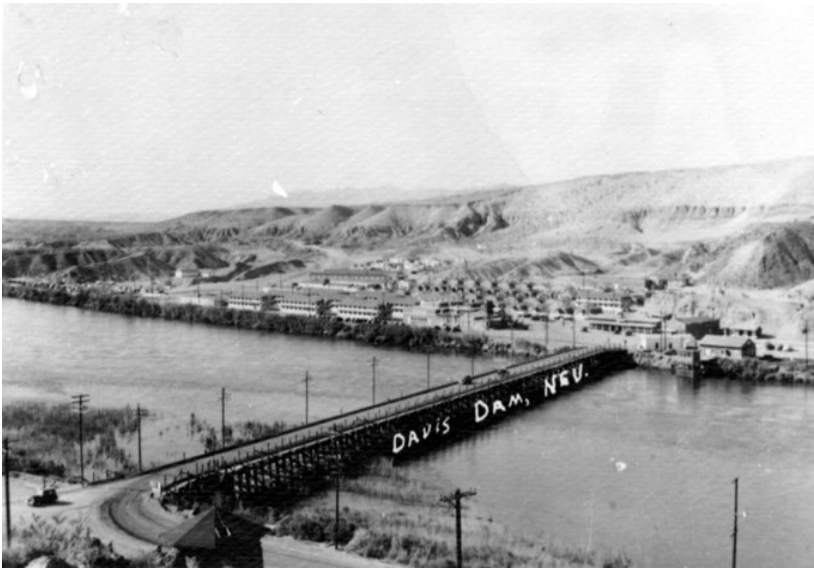
Presidents Corner

Hope everyone is having a happy summer. We hope during the summer months you can visit the museum. Our teams of volunteers are working very hard to make the museum a special place. If you have any ideas in regards to fundraising or events please contact me, I'd love to hear from you.

Our Curator, Cheryl Mangin, has sadly submitted her resignation. She will be missed. Her expertise and professional touch to our museum was greatly appreciated. We wish her success in her new endeavor at the SOS Donkey Haven.

And again, have a great summer.

~Karole



[Access Bridges - con't from page 1](#)

After excavation is finished, the downstream cofferdam will be constructed by placing impervious fill along the downstream side of the bridge, to seal of the river from the lower end of the area to be excavated for the foundation of the main dam. Cells of steel sheet piling will be driven along the Arizona end to protect the timber piling of the trestle from erosion as the Colorado is diverted from its riverbed and the entire flow discharged through the narrow outlet of the spillway. Dissipation of the energy contained in the river discharge near the end of the bridge will produce a tremendous boil and a scouring action in the channel bed which might easily undermine the piling supporting the bridge except for the protection of the sheet pile cells. A wye is now under construction to permit by-passing of truck traffic around the end of the bridge while the sheet piling is being driven.

BRIDGE NO. 4

This is the only bridge which will not be removed when the dam and appurtenant works are completed. It is located within the body of the upstream cofferdam, and will be permanently embedded when the cofferdam is finished to its final height, Designated as a "skeleton trestle" it consists of runways for two rows of trucks, with an open slot between the runways to permit dumping directly through the trestle into the river by bottom-dump Euclid Truck when diversion is finally accomplished and the Colorado is turned into the diversion channel.

BRIDGE NO. 5

Constructed, not across the Colorado River, but over the diversion channel to the east of the upstream cofferdam, Bridge No. 5 will not be used until early in 1948. At that time, construction of the main dam will commence. The central portion, or core, of the dam consists of a million cubic yards of mixed sand and clay called impervious material and forms the watertight section of the dam. This material is found in a borrow pit several miles north and east of the dam area and its transportation to the dam involves haul across the diversion channel over Bridge No. 5. Upon completion of the contract, Bridge No. 5 as well as all others except Bridge No. 4 will be removed and the timber piling pulled from the bed of the channel.

MUSINGS...

The Dam'n News Vol 1. – No. 9
January 17, 1947

Seen over Erickson's back bar at the commissary:

Big things don't bother us: it's the small ones.
You can sit on a mountain but who wants to sit on a tack?

It is well to pick your friends carefully, but not pick them too much.

I'm looking for the guy, who started that awful lie, "I'll pay you Saturday."

If you drive your old man to drink, drive him in here.

The wise man learns from the fool, but the fool learns from no one. That's why he's a fool.

Ladies may smoke but be careful where you lay your butts.

Here's to our wives' and sweethearts! May they never meet.

Many are victims of fate because they are too lazy to shape their destiny.

Seen at the Oasis Café in Bullhead City:

"We eat here Ourselves."

Call for Volunteers

The Colorado River Historical Society Museum is seeking volunteers.

If you enjoy history and want to learn more about the area, the society needs you. This is a chance to meet area visitors from all over the world and form friendships with a wonderful group of volunteers.

Many of our volunteers are part-time residents and retirees.

Hours are flexible and duties are as easy or challenging as you would like.

For more information call Karole at
928-219-2582.

EVENTS CALENDAR

No Events are planned over this summer, but keep tuned in for our upcoming events in the Fall.

Patron Event:

Late September or early October. Details forthcoming.

Annual Meeting:

November 14, 2022 - 10:00am - 11:00am

Seeking Donations for Our Collection

We are looking for any artifact that is pertinent to our Tri-state area. This includes, but is not limited to, photographs, family histories, military activity, Davis Dam, Native Americans, steamboats, ranching, fossils, explorers, highways, historical maps, churches and service clubs, businesses, and mining.

- ◆ We cannot accept an artifact with stipulations on it such as it must be displayed in a particular way or time period.
- ◆ We do not accept loans.

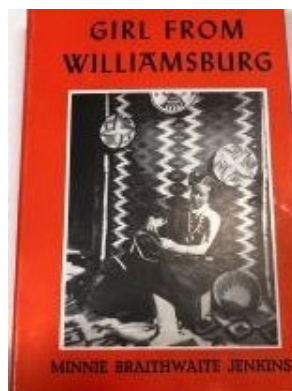
Give us a call at the museum if you have an artifact or historical item you would like us to consider.

We are actively seeking local historic photographs and Mohave Valley Daily Newspapers before 2010.

GIFT SHOP NEWS

New in the gift shop is “Girl From Williamsburg” by Minnie Braithwaite Jenkins, her memoir published in 1951. Minnie tells of her adventures as a single woman traveling from her home in Williamsburg, VA to Arizona where she taught at Indian schools, including the school at Fort Mohave from 1902-1906.

Price: \$25.00



COMMITTEES UPDATES

Collection:

The Collection Committee is currently working on the “Early Days of Bullhead City” slideshow exhibit. We are adding captions to many of the photos about the buildings depicted.



Come see our newest museum exhibit, a 1933 Johnson J-65, 1.4hp outboard motor. Thank you to volunteer Mary Wall of Jake’s Marine for all your hard work to bring this little guy back to life.

The Master Gardeners of Bullhead City have graciously accepted the challenge to work with Collection Committee in designing the “Educational Gardens” in the enclosed backyard area between the museum and the Lil’ Red Schoolhouse.

Membership:

Our membership tally is progressively growing with the addition of the Patron levels.

This month we have our Business Membership Drive that proved to be a success last year.

Please consider sharing the opportunity to support the museum by becoming a member with your friends and family.



**COLORADO RIVER
HISTORICAL SOCIETY**

1239 Highway 95 PO Box 1599
Bullhead City, Arizona Bullhead City, AZ 86430

Phone: 928-754-3399
Email: CRHSmuseum@outlook.com
Web: coloradoriverhistoricalsociety.org/

Hours of Operations:
Tuesday—Saturday 10:00am - 3:00pm

BIOARD OF DIRECTORS

- Karole Finkelstein – President
- Ralph Patterson – Vice-President
- Brenda Warneka – Secretary
- Carla Lucas – Treasurer
- Laurie Thompson – Director
- Robbie Adams – Director
- Denise Vallon – Director
- Terry Shurte – Director

Mission Statement

The mission of The Colorado River Historical Society shall be to operate a museum to promote interest and knowledge concerning the history of the Lower Colorado River area, most specifically the Tri-state area.

*** * * * MUSEUM FUNDRAISER * * * ***

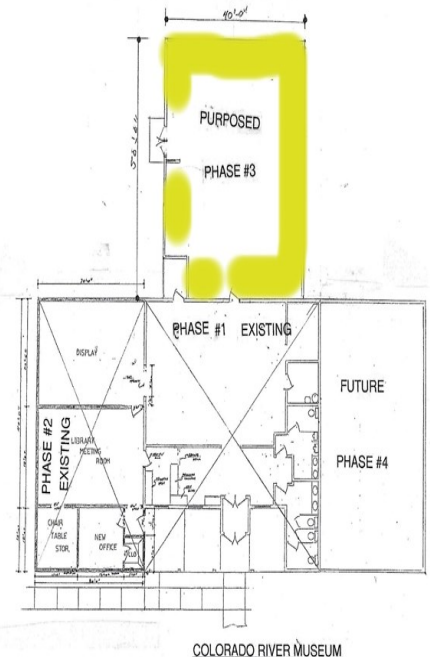
The historical society is currently in the midst of a fundraising effort, the monies of which will be used for construction of the next phase of the museum. This addition will store our archives and collections not presently displayed in the museum.

We are required, by contract, to be completely out of our Davis Dam site by June of this year. The county has generously, but only verbally, extended that date by one year. We are in need of a new home for the items that are currently being stored at there.

There are multiple shelving units that hold our collections. The artifacts have been cleaned, placed in storage bins, photographed and entered in a data base.

In the coming months the museum’s Fundraising Committee will be using a variety of methods to raise money for our building fund. In the meantime if you are interested in assisting us with a donation it would be highly appreciated. Your contribution may be tax deductible, please confirm with your tax consultant.

It takes a village and we are counting on you to help us make this a reality.



COLORADO RIVER MUSEUM